



## ATP10K100M

- M1 through M8
- Field Generator
- 3000 Watts CW
- 10kHz–100MHz

### Features

AR RF/Microwave Instrumentation's Model ATP10K100M is a broadband, high power RF Field Generator. The unit is capable of generating intense fields in a large volume over a wide frequency range. This balanced parallel conductor transmission line produces both E (electric) and H (magnetic) fields, (See Figure 1).

The ATP10K100M is 2.4 meters long and 1.0 meter wide. Matching transformer and load resistors are built in and provide excellent VSWR characteristics over a frequency range of 10 kHz to 100 MHz.

To achieve maximum flexibility in use the ATP10K100M can be rotated and the height adjusted to accommodate the unit

under test. The unit is also mounted on a stand equipped with casters for maximum mobility. Items small enough to fit between the elements can be placed on a pedestal or table and the ATP10K100M adjusted to surround them. For larger items, the height and angle of the radiating elements can be changed for maximum field strength.

The export classification for this equipment is EAR99. These commodities, technology or software are controlled for export in accordance with the U.S. Export Administration Regulations. Diversion contrary to U.S. law is prohibited.

### Specifications

**POWER INPUT, CW:** 3000 watts maximum

**FREQUENCY RESPONSE:** 10 kHz-100 MHz

**INPUT IMPEDANCE:** 50 ohms

**VSWR:** 2.0:1 max, 10 kHz-100 MHz;  
6:1 max, 10-20kHz above 1kW input power

**ELECTRIC FIELD INTENSITY:** See Figure 1

**RF INPUT CONNECTOR:** See Model Configurations

**COOLING:** Natural convection to 40° ambient temperature

**WEIGHT:** 95 kg, 210 lb

**SIZE (W x H x D maximum):** 265 x 240 x 120 cm, 105 x 96 x 49 in

**SIZE (W x H x D minimum):** 265 x 206 x 120 cm, 105 x 81 x 49 in

**EXPORT CLASSIFICATION:** EAR99

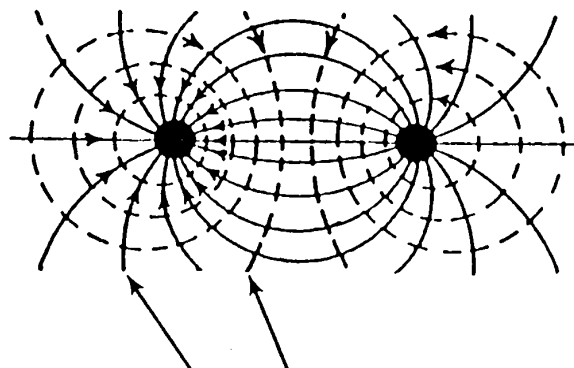


Fig. 1 E and H Field Pattern

AR RF/Microwave  
Instrumentation  
160 School House Rd  
Souderton, PA 18964  
215-723-8181

For an applications engineer call: 800.933.8181

www.arworld.us



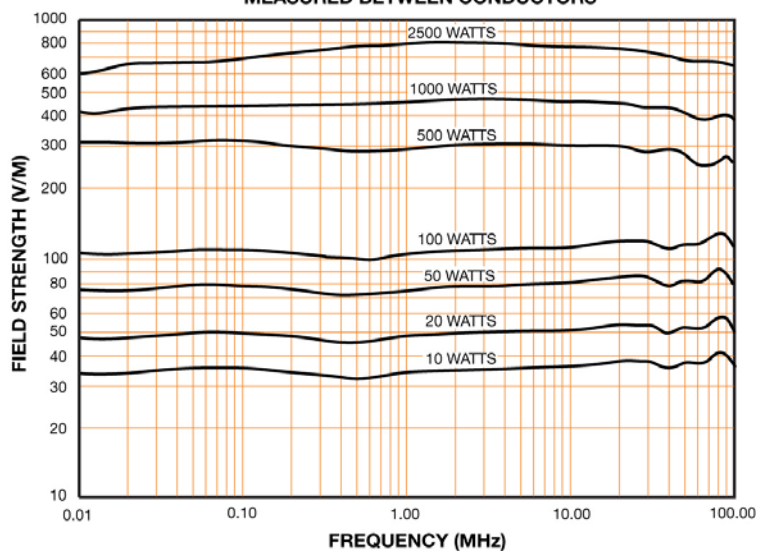
ATP10K100M

- M1 through M8
- Field Generator
- 3000 Watts CW
- 10kHz–100MHz

MODEL CONFIGURATIONS

Model Number	RF Input Connector Type	Description
ATP10K100M	C(f) (plus N(f) quick change connector)	Supplied with basic stand.
ATP10K100MM1	7-16 DIN female	Supplied without stand. See individual specification sheet.
ATP10K100MM2	7-16 DIN female	Supplied with basic stand. See individual specification sheet.
ATP10K100MM3	C(f) (plus N(f) quick change connector)	Supplied with 3-axis stand. See individual specification sheet.
ATP10K100MM4	7-16 DIN female	Supplied with 3-axis stand. See individual specification sheet.
ATP10K100MM6	7/8 EIA swivel	Supplied with 3-axis stand. See individual specification sheet.
ATP10K100MM7	7-16 DIN female	Supplied with reduced height basic stand. See individual specification sheet.
ATP10K100MM8	7-16 DIN female	Supplied without stand. Includes pivot plates. See individual specification sheet.

FIELD STRENGTH vs. FREQUENCY  
MEASURED BETWEEN CONDUCTORS



FIELD STRENGTH vs. FREQUENCY  
MEASURED AT 1 METER

